

Report Card



Gerrie Garton
Principal



25314 Baker Street
Black Diamond, WA 98010
(360) 802-7570
Built 1961 -- 10 classrooms

Welcome to Black Diamond Elementary

Black Diamond Elementary School, part of the Enumclaw School District, is a unique community dedicated to providing a safe, caring and nurturing environment where all students, staff and families are committed to excellence and lifelong learning. The leadership and staff at Black Diamond Elementary are a group of dedicated professionals who consistently seek research-based practices to ensure high levels of learning for all students. Our school community serves approximately 300 students in kindergarten through fifth grade which does not include students in our ECEAP Program.

With our district's strong focus on literacy you will find Black Diamond Elementary students engaged in literacy learning targeted at their instructional levels in Daily Literacy Blocks. Literacy Block teams include the classroom teacher, para educators, Title I/LAP and Special Education staff. Planning time for the Literacy Block teams to collaborate and plan has been built into the weekly schedule. This allows teams to focus on factors that directly impact student learning. In addition to a strong focus on literacy our school embraces a balanced approach to mathematics focusing on teaching math concepts for deep understanding as well as ensuring that students have strong skills in computational fluency. Our students also have the opportunity to participate in music and physical education twice a week. It is our goal at Black Diamond Elementary that all our students will not only learn how to read,

write, and solve mathematical problems, but that they will joyfully choose to do so both in school and throughout their lives.

Our students at Black Diamond Elementary are supported in their learning through our Learning Support program, our Special Education and Title I/ LAP programs. These services which focus on student learning are delivered in the classroom and in a pull-out model based on individual student needs. Family and community volunteers assist teachers and school staff in helping our students, and the Black Diamond Community Center provides a before-and-after school care program. We are so fortunate to have an amazing partnership with both the Black Diamond Police and Fire Departments. Both departments provide classroom instruction and are highly visible on our school campus. The Black Diamond Elementary PTA brings a wonderful partnership in support of learning for our students and staff. Our PTA has provided countless gestures of support including the sponsorship of activities and evening events to extend learning throughout our school community membership.

Black Diamond Elementary is an exciting place of learning for our students and staff. Our dedicated staff, families and community continue to contribute to making Black Diamond a great place for kids. We invite you to come by, as a visitor or volunteer, and join us in the excitement of learning!



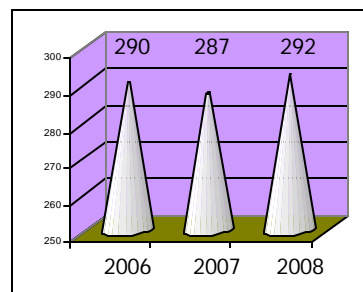
BLACK DIAMOND ELEMENTARY STAFF

Principal	1	TSL	1
Regular	12	Special Programs	
Special Education	1	Music	1
Title I/LAP	1	P. E.	1
Counselors	1	Library	1
Educational Assts.	11	Healthroom Prof.	1
Office Personnel	1	Cafeteria	1
ECEAP	3	Custodians	2

Free and
Reduced
Lunch
=
27%

Turn-Over
Rate
=
21%

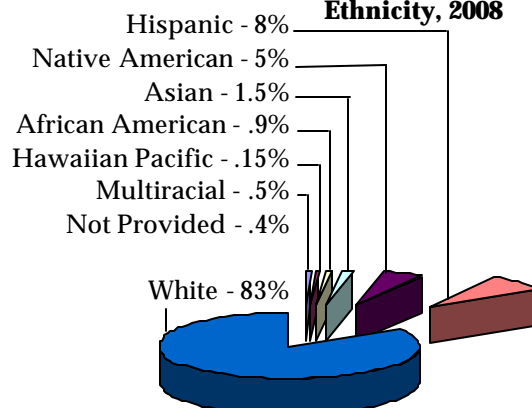
TOTAL ENROLLMENT



Average
Daily Student
Attendance
=
95%

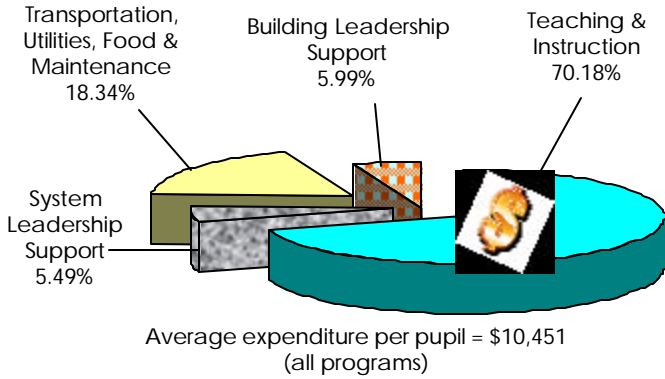
Student:
Teacher
Ratio
=
20.9:1

District Student Ethnicity, 2008

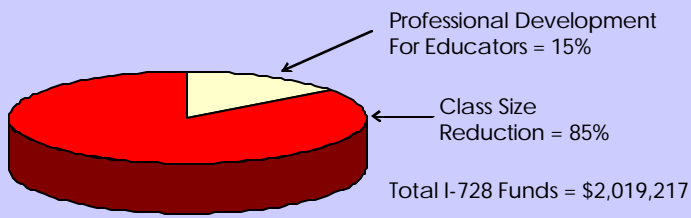


Education Profile is a comprehensive website for parents to use to see how well schools and districts are progressing with education reform. It includes results from the WASL Test taken by Washington students; demographic information at the state, district and building level; and an easy-to-use analysis tool for comparisons of schools and districts based on the user's selected criteria. To view more information about our school, you may visit the following link to the Washington Office of Superintendent of Public Instruction website: <http://reportcard.ospi.k12.wa.us>.

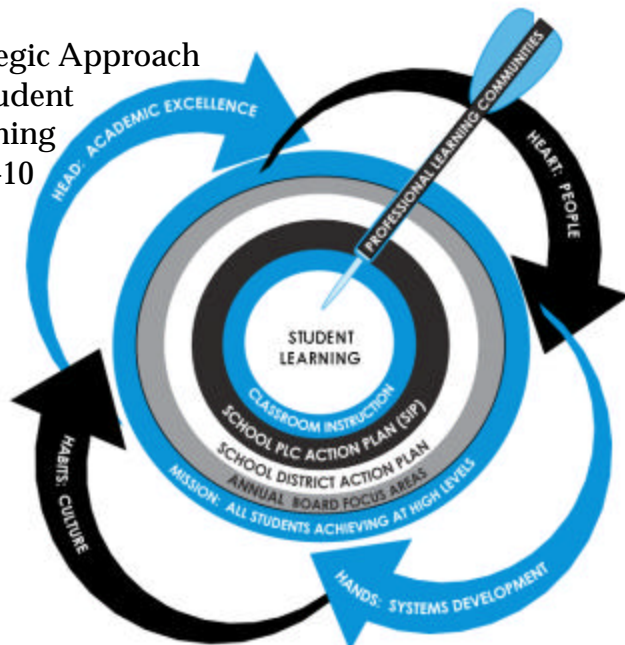
2008-2009 Annual Budget Report



2008-2009 Annual I-728 Report

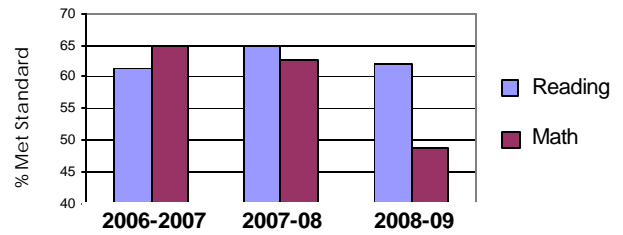


Strategic Approach to Student Learning 2009-10



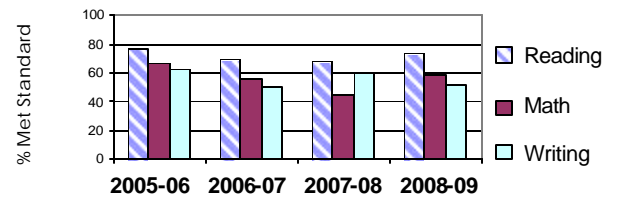
Black Diamond Grade 3 WASL Trend

	2006-07	2007-08	2008-09
Reading	61.4	65.1	62.2
Math	64.9	62.8	48.9



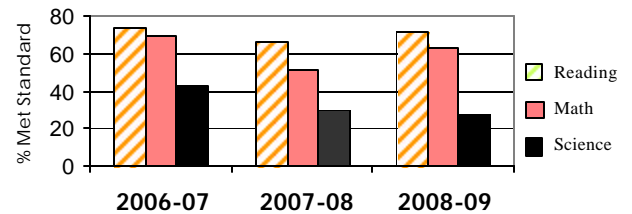
Black Diamond Grade 4 WASL Trend

	2005-06	2006-07	2007-08	2008-09
Reading	77.8	69.8	67.9	72.7
Math	66.7	55.8	45.3	59.1
Writing	62.2	51.2	60.4	52.3



Black Diamond Grade 5 WASL Trend

	2006-07	2007-08	2008-09
Reading	73.9	66.0	71.4
Math	69.6	51.1	63.3
Science	43.5	29.8	27.1



LEARNING IMPROVEMENT DAYS

During the 2008-2009 school year, the Washington State legislature provided two additional days of teacher time to be used for inservice training and teacher planning. These days were designed to support our efforts to help all students meet the new, higher learning standards identified in our state. The following represents how these two days were used in the Enumclaw School District:

Day 1 - August, 2008: Sam Glenn--Author, Motivational Speaker and Artist

Day 2 - October, 2008: School improvement efforts to support learning of ALL students