

Report Card



Julene Miller
Principal



2057 Kibler Avenue
Enumclaw, WA 98022
(360) 802-7263
Built 1953 -- 24 classrooms

2008-2009

BYRON KIBLER ELEMENTARY STAFF

| | | | |
|--------------------|----|------------------|---|
| Principal | 1 | Special Programs | |
| Regular | 18 | Music | 1 |
| Special Education | 1 | P. E. | 1 |
| Title I/LAP | 1 | Library | 1 |
| Counselors | 1 | Healthroom Prof. | 1 |
| Educational Assts. | 13 | Cafeteria | 2 |
| Office Personnel | 2 | Custodians | 2 |
| TSL | 1 | | |

The Byron Kibler Community encourages success through active participation in a child-centered environment that fosters creativity, self-management, and life-long learning. Byron Kibler is a K-5 elementary school housing around 430 students. Our school is a positive, caring, and friendly place for learning and growing.



of parent and community volunteers. The relationships that our staff members develop with our students and their families enable strong partnerships to develop between our school and home. These individual relationships and working partnerships are key components to our success as a community of learners.

Our primary focus continues to be directed at encouraging and enabling all of our students to develop a life-long learning desire for reading, writing, and math. We are always seeking opportunities to provide interesting and challenging experiences for our students to connect their new and prior knowledge to their current learning. We continue to improve our ability to further implement an integrated approach to our various curricula. This approach focuses on providing instruction that promotes higher level thinking skills, which allows our students to be exposed to the content of various subjects while developing skills that will be used in everyday life situations. Staff development this school year will focus on math in the areas of instruction and curriculum with the addition of the new state math standards tied to our new math adoption, Math Expressions.

The Kibler PTA provides a high level of support and enthusiasm for our school programs. This group of highly motivated individuals brings an immense amount of support and energy into our classrooms and school. Their leadership helps coordinate and support our student programs, school-wide fundraisers, family activities throughout the year, and continues to assist in bringing our Kibler community closer together.

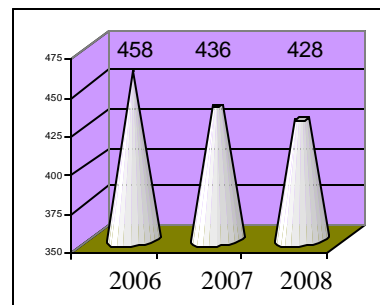
At Byron Kibler, we offer many activities to our students and our families that are focused on learning and fun. Some of these school-wide special activities include "Meet Your Teacher" afternoon, family math and reading nights, assemblies, and special spirit days. We invite you to participate in the many exciting and enjoyable activities we have planned throughout the school year. Working together we can help our students discover their full potential and support all students achieving at high levels. We look forward to your visit! Byron Kibler is the school with heart!

We are very fortunate to have our students and school programs supported by a growing number

Free and Reduced Lunch
=
33%

Turn-Over Rate
=
20%

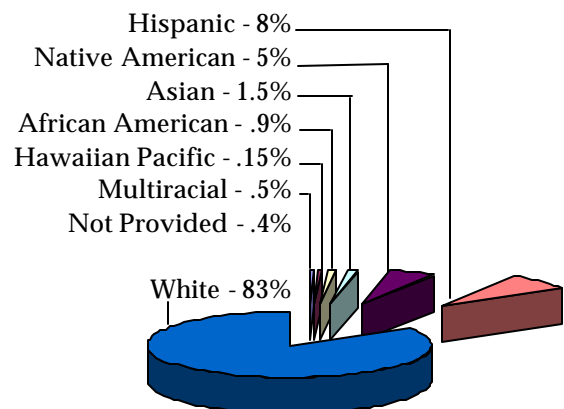
TOTAL ENROLLMENT



Average Daily Student Attendance
=
95%

Student: Teacher Ratio
=
21.4:1

District Student Ethnicity, 2008



Education Profile is a comprehensive website for parents to use to see how well schools and districts are progressing with education reform. It includes results from the WASL Test taken by Washington students; demographic information at the state, district and building level; and an easy-to-use analysis tool for comparisons of schools and districts based on the user's selected criteria. To view more information about our school, you may visit the following link to the Washington Office of Superintendent of Public Instruction website: <http://reportcard.ospi.k12.wa.us>.

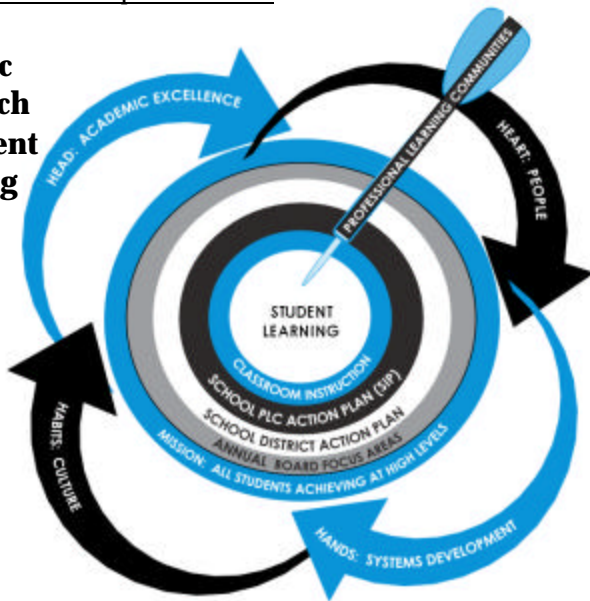
LEARNING IMPROVEMENT DAYS

During the 2008-2009 school year, the Washington State legislature provided two additional days of teacher time to be used for inservice training and teacher planning. These days were designed to support our efforts to help all students meet the new, higher learning standards identified in our state. The following represents how these two days were used in the Enumclaw School District:

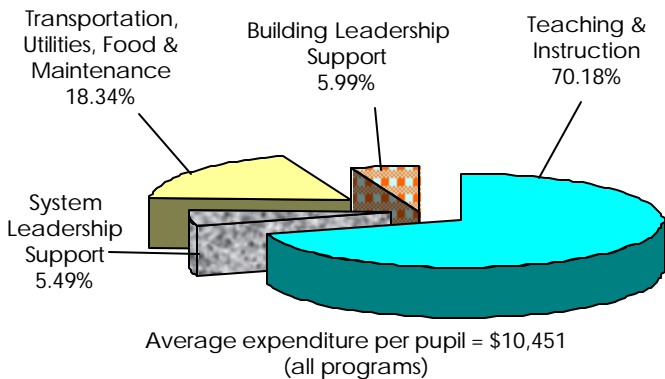
Day 1 – August, 2008: Sam Glenn--Author, Motivational Speaker and Artist

Day 2 – October, 2008: School improvement efforts to support learning of ALL students

Strategic Approach to Student Learning 2009-10

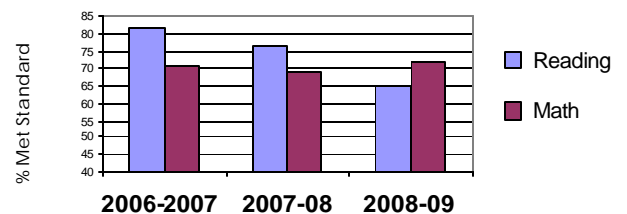


2008-2009 Annual Budget Report



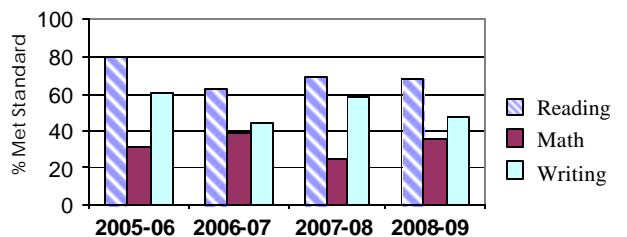
Byron Kibler Grade 3 WASL Trend

| | 2006-07 | 2007-08 | 2008-09 |
|---------|---------|---------|---------|
| Reading | 81.7 | 76.5 | 65.3 |
| Math | 70.7 | 69.1 | 72.0 |



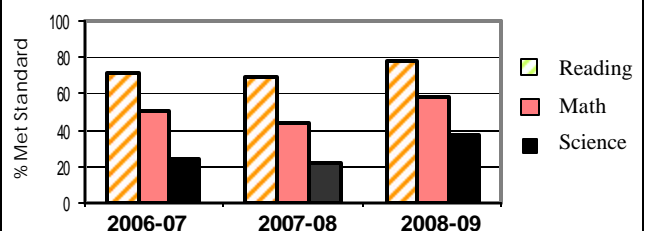
Byron Kibler Grade 4 WASL Trend

| | 2005-06 | 2006-07 | 2007-08 | 2008-09 |
|---------|---------|---------|---------|---------|
| Reading | 80.2 | 62.3 | 69.2 | 68.1 |
| Math | 32.3 | 39.1 | 25.6 | 36.2 |
| Writing | 60.4 | 44.9 | 59.0 | 47.8 |



Byron Kibler Grade 5 WASL Trend

| | 2006-07 | 2007-08 | 2008-09 |
|---------|---------|---------|---------|
| Reading | 71.6 | 69.5 | 77.3 |
| Math | 51.6 | 43.9 | 58.7 |
| Science | 24.2 | 22.0 | 37.3 |



2008-2009 Annual I-728 Report

