

ENUMCLAW HIGH SCHOOL Report Card

2008-2009



Jill Burnes
Principal

Ed Hatzenbeler
Vice Principal

Paul Iacobazzi
Vice Principal

Kevin Smith
Vice Principal
Athletic Director

Christy Weinbrecht
Activities Director



226 Semanski Street S.
Enumclaw, WA 98022
(360) 802-7669
Built 1961 -- Renovation/
Modernization 1999-2000

Our School

Enumclaw High School provides a safe, challenging and nurturing learning environment. The support and feedback that EHS receives from staff, students, families and community members continues to assist us in providing a high quality educational experience for all students. The staff at Enumclaw High School is committed to ensuring every student graduates prepared for success in post-secondary education and the 21st century world of work and citizenship. Staff members dedicate themselves to the success of each student working in a collaborative and supportive environment focused on student learning and the continuous improvement of our instructional program.

Principal's Welcome

I am honored to serve as principal of Enumclaw High School. The staff at EHS strives to work in partnership with our students and parents. As a staff, we believe in doing our best to ensure that every student leaves high school college/career ready. We want students to have every possible door open to them as they make the post-high school plans.

We are working hard to provide the best education possible for our students, through hiring exceptional staff to developing a rigorous and relevant instructional program that allows students to reach their highest potential. Our WASL reading score of 90.7% and our WASL writing score of 93.4% are strong indications of our ability to achieve goals we have set forth as a school.

Inside these pages, you will learn more about our school and what we are about. You will see several data points as well as demographic information. If you have any questions, comments, or would like to know how you can get involved in the education of our students, please feel free to give me a call at 360-802-7669. I would love to hear your thoughts.

Involving Families and Community in Student Learning

Families play an important role in the lives of our students. We encourage all parents to maintain open lines of communication with their child's teachers to reinforce education in the home. Family Access is a key tool in assisting the home-to-school connection. This free service allows you to log in and view your child's assignments, grades, attendance and discipline.

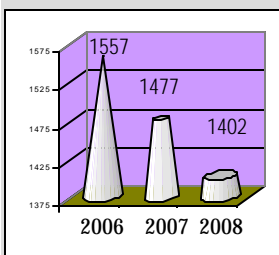
Focus on Powerful Teaching and Learning

Enumclaw High School has an experienced staff with a strong educational background that qualifies them to be high school instructors. More importantly, our staff has a commitment to continuous learning. As a staff, we meet regularly to examine student learning results, reflect on instructional practice and curriculum and discuss strategies to better meet the needs of all students.

Enumclaw High School Mission Statement

Enumclaw High School will prepare each student for success in post-secondary education, work and citizenship for the 21st century.

TOTAL ENROLLMENT



Free and Reduced Lunch = 18%

Turn-Over Rate = 14.7%

Average Daily Student Attendance = 92.4%

Student Teacher Ratio = 20.3:1

ENUMCLAW HIGH SCHOOL STAFF

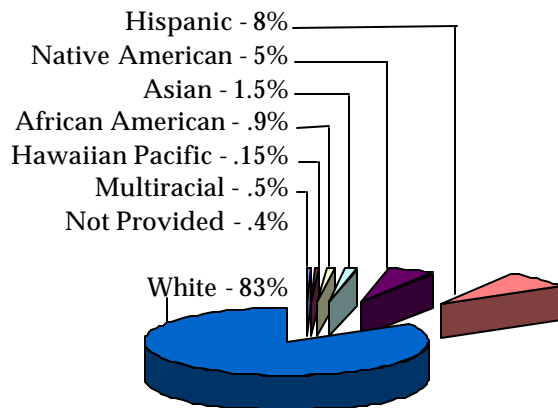
Principal	1	Educational Assts.	17
Asst. Prin./Admin.	3	Office Personnel	10
Activity Director	1	<i>Special Programs</i>	
Athletic Director	1	Library	1
Safe & Civil Schools	1	Healthroom Prof.	1
Regular	62	Cafeteria	15
Special Education	6	Custodians	8
ELL	1	Nat. Am. Specialist	1
Counselors	4		

E-News

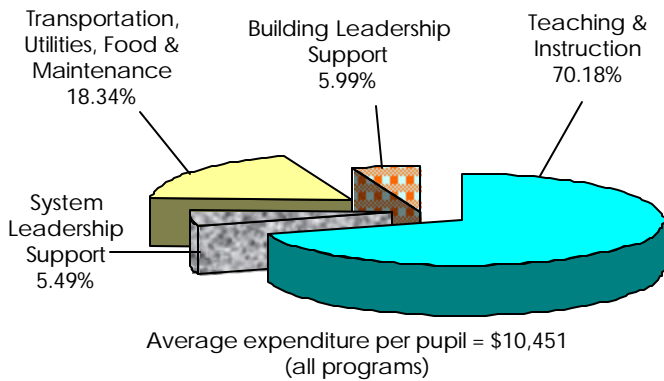
In an effort to keep families informed of the current happenings as EHS, we are publishing a monthly E-News. If you would like to subscribe, please contact Renee Barquest at 360-802-7669.

Education Profile is a comprehensive website for parents to use to see how well schools and districts are progressing with education reform. It includes results from the WASL Test taken by Washington students; demographic information at the state, district and building level; and an easy-to-use analysis tool for comparisons of schools and districts based on the user's selected criteria. To view more information about our school, you may visit the following link to the Washington Office of Superintendent of Public Instruction website: <http://reportcard.ospi.k12.wa.us>.

District Student Ethnicity, 2008



2008-2009 Annual Budget Report



LEARNING IMPROVEMENT DAYS

During the 2008-2009 school year, the Washington State legislature provided two additional days of teacher time to be used for inservice training and teacher planning. These days were designed to support our efforts to help all students meet the new, higher learning standards identified in our state. The following represents how these two days were used in the Enumclaw School District:

Day 1

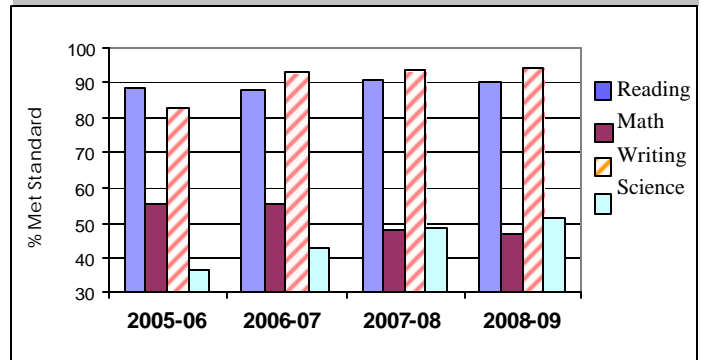
August, 2008
Sam Glenn--*Author, Motivational Speaker and Artist*

Day 2

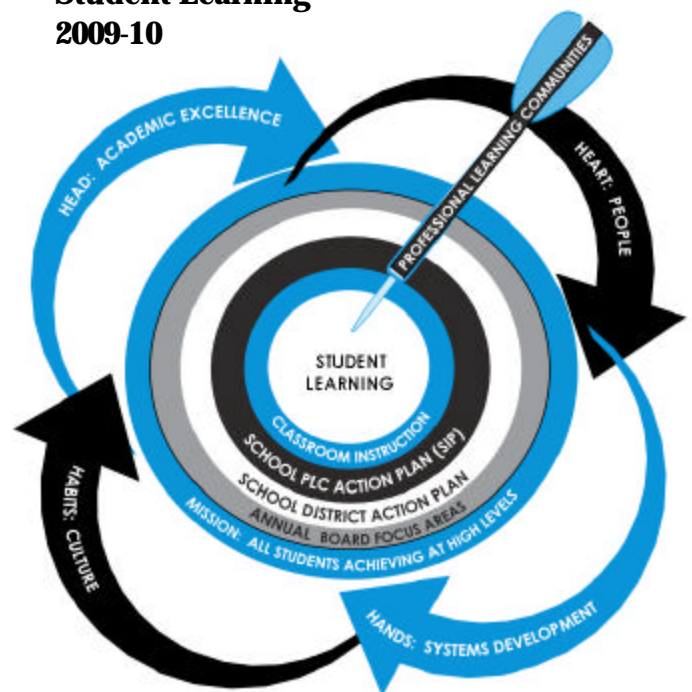
October, 2008
School improvement efforts to support learning of ALL students

Enumclaw High School Grade 10 WASL Trend

	2005-06	2006-07	2007-08	2008-09
Reading	88.4	87.8	90.7	90.0
Math	55.2	55.2	47.5	47.3
Writing	82.9	92.9	93.4	94.6
Science	36.5	42.5	48.3	51.5



Strategic Approach to Student Learning 2009-10



2008-2009 Annual I-728 Report

