

SUNRISE ELEMENTARY Report Card



Chris Beals
Principal



899 Osceola at 244th
Enumclaw, WA 98022
(360) 802-7425
Built 1992



Welcome to Sunrise Elementary School!

The Sunrise Eagles school community has started the 2009-10 school year with a terrific beginning welcoming approximately 375 students, ranging from age five through twelve, and their families to another exciting year of learning here at Sunrise!

Our beautiful school facility, built and opened in 1992, is the newest elementary school in our school district. The building is organized into four main classroom areas which house the seventeen classroom communities in our school. In addition, our children visit specialty classrooms and the multipurpose room on a regular basis throughout their weekly routine at school.

With our district's strong focus in literacy, you'll find Sunrise students engaged in plenty of reading and writing throughout the school day at all age levels. In addition, our school embraces a balanced approach to mathematics focusing on teaching math concepts for deep understanding as well as ensuring that students have strong skills on computational fluency. The careful monitoring of student progress, the one-on-one attention to individual students, and several after-school tutoring programs have all made a significant difference in the learning of our students. It is our goal that all children at Sunrise Elementary will not only learn how to read, write, and solve mathematical problems, but that they will joyfully choose to do so both in school and throughout their lives.

Sunrise has enjoyed a strong tradition of dedicated family and community support from a multitude of regular volunteers in our school and through the more formal and generous support of our PTA

organization. The Sunrise Eagles PTA, founded in the 2005-2006 school year, brings a wonderful partnership in support of learning for our students and regularly boasts a membership of over 120 members! Our PTA has provided countless gestures of support including the sponsorship of several family nights during the school year, support for field trips, special assemblies, and special events for our students, the purchase of books to support our students as readers, the purchasing of numerous pieces of technology to be used by students and staff for learning, the compilation of an annual Sunrise yearbook, and a wonderful end-of-year celebration for the entire Sunrise school community!

There is much to be celebrated at Sunrise Elementary. Perhaps it's the enthusiastic and very dedicated staff members who spent countless summer hours increasing their own professional learning and creating a welcoming environment for our children. Instead, it may be the numerous ways our school has connected to the greater community to give back to those less fortunate than ourselves. Maybe, it's the special events that occur and the special guests that visit our school throughout the year. Or, it might just be the smiling faces of young people entering our school each morning to learn and grow with those around them. With these moments in mind, or the countless others not mentioned, Sunrise Elementary clearly is an exciting place for all children to learn and grow!

We welcome your participation and support of the important work of our students each day. Together, we make a difference for our children!

Free and Reduced Lunch
=
33%

Turn-Over Rate
=
15%

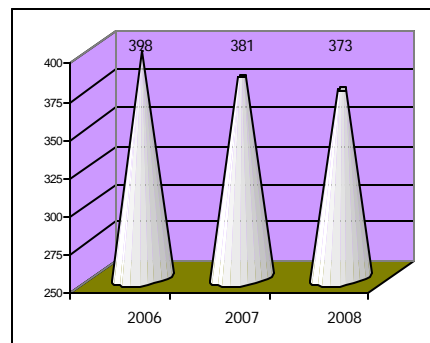
Average Daily Student Attendance
=
95%

Student Teacher Ratio
=
19.6:1

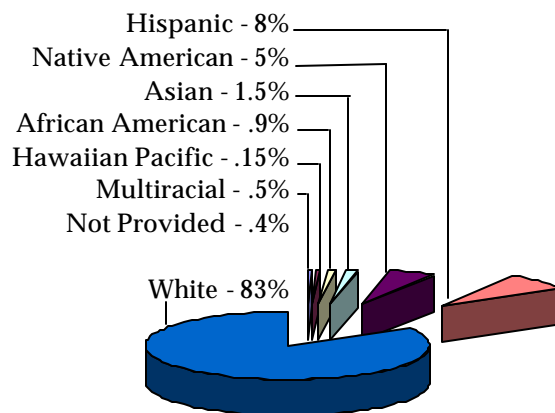
SUNRISE ELEMENTARY STAFF

Principal	1
Regular	17
Special Education	1
Title I/LAP	1
Counselors	1
Educational Assts.	12
Office Personnel	2
TSL	1
Special Programs	
Music	1
P. E.	1
Library	1
Healthroom Prof.	1
Cafeteria	2
Custodians	2

TOTAL ENROLLMENT

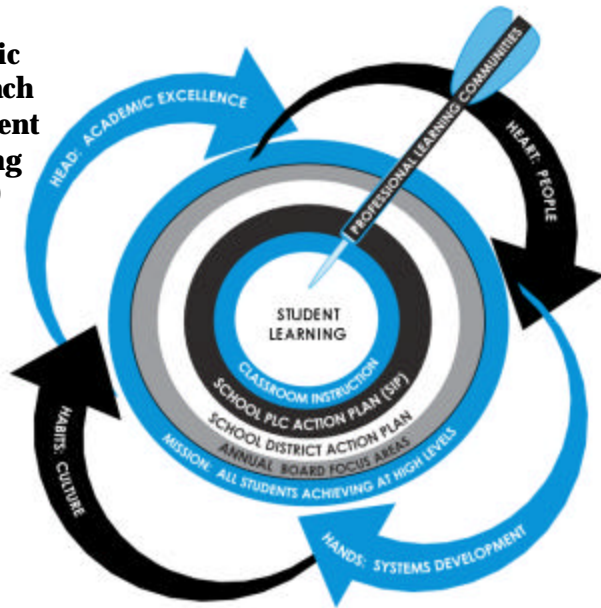


District Student Ethnicity, 2008

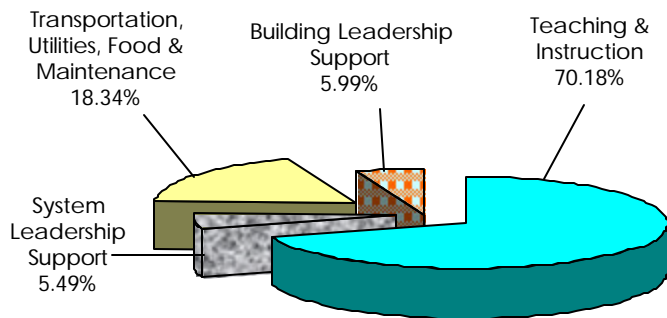


Education Profile is a comprehensive website for parents to use to see how well schools and districts are progressing with education reform. It includes results from the WASL Test taken by Washington students; demographic information at the state, district and building level; and an easy-to-use analysis tool for comparisons of schools and districts based on the user's selected criteria. To view more information about our school, you may visit the following link to the Washington Office of Superintendent of Public Instruction website: <http://reportcard.ospi.k12.wa.us>.

Strategic Approach to Student Learning 2009-10

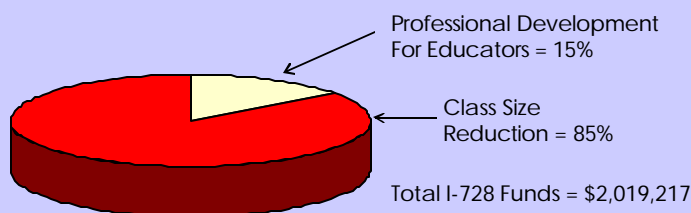


2008-2009 Annual Budget Report



Average expenditure per pupil = \$10,451 (all programs)

2008-2009 Annual I-728 Report



LEARNING IMPROVEMENT DAYS

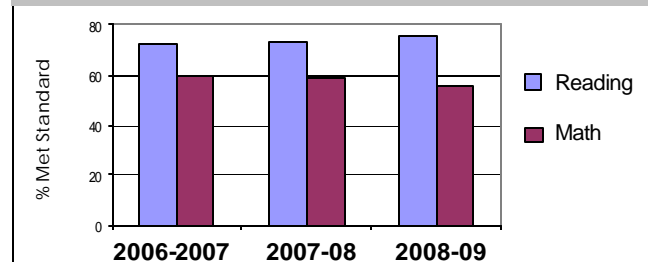
During the 2008-2009 school year, the Washington State legislature provided two additional days of teacher time to be used for inservice training and teacher planning. These days were designed to support our efforts to help all students meet the new, higher learning standards identified in our state. The following represents how these two days were used in the Enumclaw School District:

Day 1 – August, 2008: Sam Glenn--Author, Motivational Speaker and Artist

Day 2 – October, 2008: School improvement efforts to support learning of ALL students

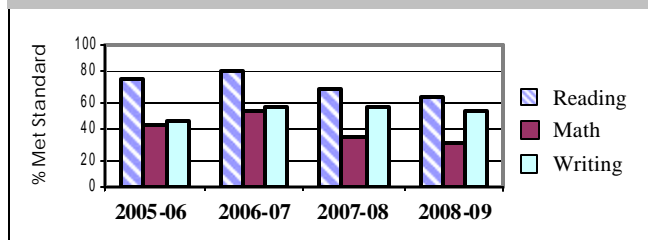
Sunrise Grade 3 WASL Trend

	2006-07	2007-08	2008-09
Reading	72.7	73.2	74.7
Math	60.0	58.9	56.0



Sunrise Grade 4 WASL Trend

	2005-06	2006-07	2007-08	2008-09
Reading	74.2	80.9	67.8	63.2
Math	42.4	54.4	35.6	29.8
Writing	45.6	55.9	57.6	52.6



Sunrise Grade 5 WASL Trend

	2006-07	2007-08	2008-09
Reading	72.7	82.6	65.1
Math	59.1	47.8	42.9
Science	43.9	39.1	23.8

