



Report Card

2008-2009



Virginia Callison
Principal



42018 264th Ave. SE
Enumclaw, WA 98022
(360) 802-7492
Built 2000 -- 39 classrooms

THUNDER MOUNTAIN MIDDLE SCHOOL STAFF			
Principal	1	Counselors	1
Dean of Students	1	Education Assts.	9
Regular	22	Office Personnel	4
Special Education	3	Healthroom Prof.	1
Special Programs		Cafeteria	5
Library	1	Custodians	4

"Building Community,
One Relationship at a Time"

Welcome to Thunder Mountain Middle School!

At Thunder Mountain, providing a warm, academically challenging environment for all students is our highest priority. Our staff members are committed to working with students and families to support the academic, social, and emotional growth of each child. Our curriculum offers a wide variety of subject matter designed to promote reflection and exploration that is appropriate for adolescent children.

Having opened in the fall of 2000, Thunder Mountain Middle School is the newest school in the Enumclaw School District. The facility is organized into three "neighborhoods", where students and teachers are members of grade level teams. Structuring the school in this way has allowed for the development of close relationships between students and staff members, and stronger partnerships between teachers and families. This, in turn, allows staff members to provide immediate support to students who would benefit from additional challenge or who require additional support to succeed.

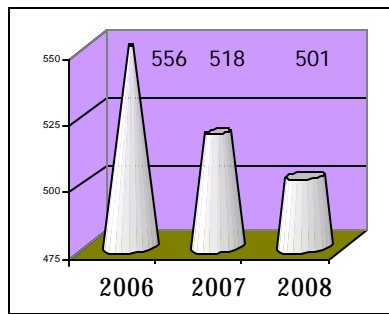
Students at Thunder Mountain Middle School are encouraged to

participate in extracurricular activities and athletics to help facilitate a sense of connectedness with school. Our extensive athletic and after-school activity programs offer students in grades six through eight a number of opportunities to participate in a wide variety of after-school programs.

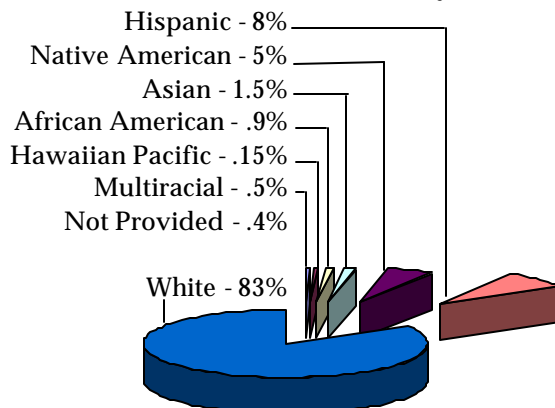
Thunder Mountain parents are encouraged to become active members of the school community by attending activities such as Open House, Regional History Day competition, evening musical and drama performances, athletic events, and classroom demonstrations of learning. We are fortunate to have the strong support of parent volunteers for a variety of school events.

Thunder Mountain Middle School staff recognizes the importance of students' middle school experiences in building student self-esteem and fostering academic success in high school and beyond. In addition to providing students with strong academic skills, we are also committed to supporting students as they become responsible, contributing citizens in our community.

Free and Reduced Lunch = 24%	Turn-Over Rate = 9%
TOTAL ENROLLMENT	Average Daily Student Attendance = 92%
	Student Teacher Ratio = 19.2:1

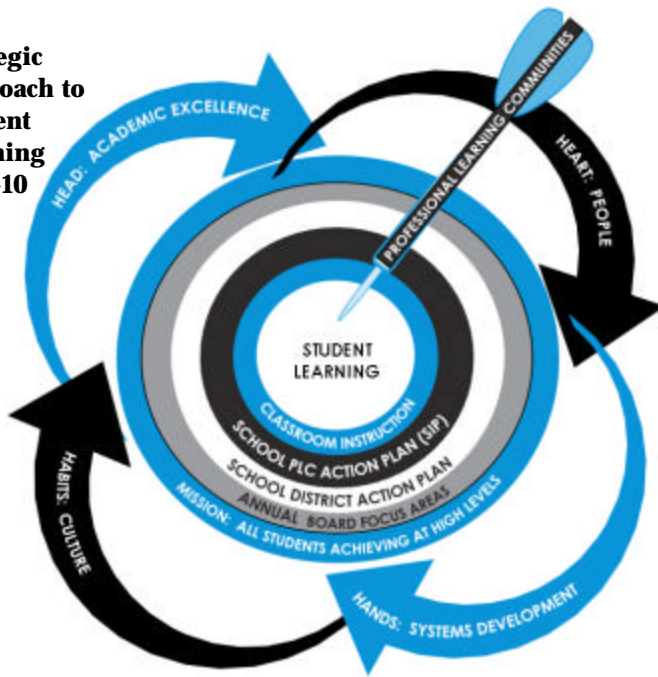


District Student Ethnicity, 2008

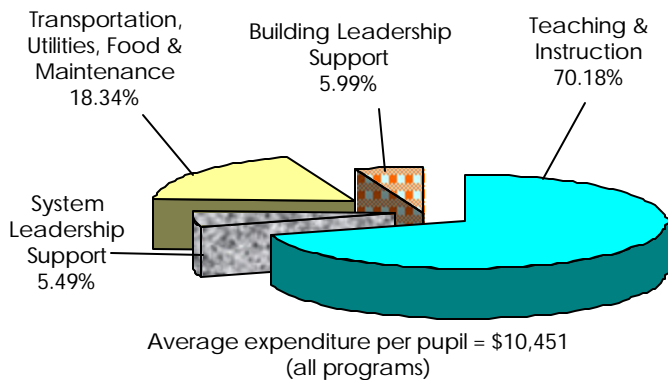


Education Profile is a comprehensive website for parents to use to see how well schools and districts are progressing with education reform. It includes results from the WASL Test taken by Washington students; demographic information at the state, district and building level; and an easy-to-use analysis tool for comparisons of schools and districts based on the user's selected criteria. To view more information about our school, you may visit the following link to the Washington Office of Superintendent of Public Instruction website: <http://reportcard.ospi.k12.wa.us>.

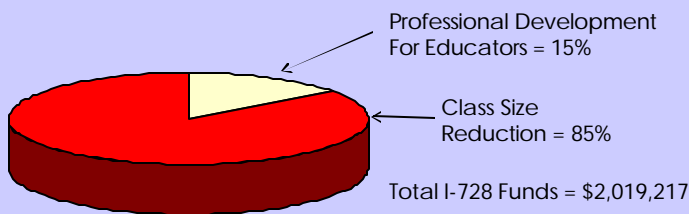
Strategic Approach to Student Learning 2009-10



2008-2009 Annual Budget Report



2008-2009 Annual I-728 Report



LEARNING IMPROVEMENT DAYS

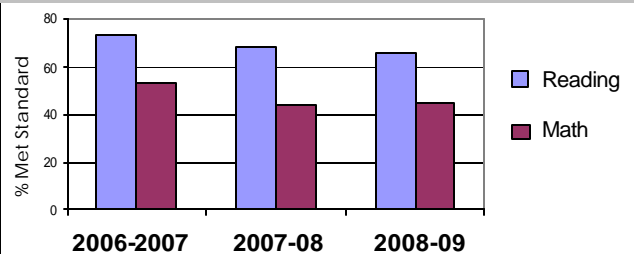
During the 2008-2009 school year, the Washington State legislature provided two additional days of teacher time to be used for inservice training and teacher planning. These days were designed to support our efforts to help all students meet the new, higher learning standards identified in our state. The following represents how these two days were used in the Enumclaw School District:

Day 1 – August, 2008: Sam Glenn--Author, Motivational Speaker and Artist

Day 2 – October, 2008: School improvement efforts to support learning of ALL students

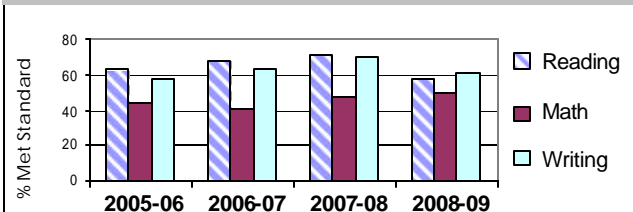
Thunder Mountain Middle School Grade 3 WASL Trend

	2006-07	2007-08	2008-09
Reading	73.6	68.6	65.8
Math	52.5	43.8	44.5



Thunder Mountain Middle School Grade 7 WASL Trend

	2005-06	2006-07	2007-08	2008-09
Reading	63.1	68.1	71.0	58.1
Math	44.4	40.8	48.0	49.0
Writing	58.3	63.2	70.5	61.9



Thunder Mountain Middle School Grade 8 WASL Trend

	2006-07	2007-08	2008-09
Reading	68.8	59.9	76.4
Math	49.5	34.2	47.8
Science	54.8	42.2	59.9

