

WESTWOOD ELEMENTARY Report Card

2008-2009



Keri Marquand
Principal



21200 SE 416th
Enumclaw, WA 98022
(360) 802-7620
Built 1964

Westwood Elementary School is a Professional Learning Community. We are committed to creating an environment that supports mutual cooperation and personal growth as we work together to accomplish what we cannot do alone. Our vision in the following areas guides our work together.

- ◆ **School Climate** - Westwood is committed to creating a welcoming, safe, caring environment that supports the success of students and staff. Last year we launched a new system of "Positive Behavior Support", designed to teach and encourage positive behavior in all our students. We began our year by launching the "3 B's", "Be Respectful, Be Responsible, Be Safe". Each week students learn how our "3 B's" apply in different areas of the school.
- ◆ **Best Practices** - Learn and apply the best practices for improving instruction in all of our classrooms. This year we are implementing a new math curriculum, "Math Expressions". This curriculum is closely tied to the state math standards.
- ◆ **Data-Based Decision Making** - Collect and use data on student achievement to measure improvement and inform

instruction.

- ◆ **Collaboration** - Classroom teachers participate in a collaborative group weekly during our Friday afternoon early dismissal time. Teachers focus on four essential questions: What do we want all students to learn? How will we know they have learned it? What will we do when they don't learn it? What will we do if they already know it?
- ◆ **Pyramid of Interventions** - Support all students through a variety of systems including prevention, intervention and enrichment.
- ◆ **Families** - Build close working relationships with families to enhance student achievement and promote positive relationships.
- ◆ **Leadership** - Staff members take on a variety of leadership roles throughout the school.

We are fortunate at Westwood to have a very involved group of parents. On any given day, one will find volunteers helping with instruction throughout our school. Our PTA also sponsors community events such as skating parties, Bingo, movie nights and emergency preparedness. Our dedicated staff and involved parents continue to contribute to making Westwood a great place for kids!

WESTWOOD ELEMENTARY STAFF

| | |
|--------------------|----|
| Principal | 1 |
| Regular | 16 |
| Special Education | 4 |
| Title I/LAP | 1 |
| Counselors | 1 |
| Educational Assts. | 21 |
| Office Personnel | 2 |
| TSL | 1 |
| Special Programs | |
| Music | 1 |
| P. E. | 1 |
| Library | 1 |
| Healthroom Prof. | 1 |
| Cafeteria | 3 |
| Custodians | 2 |

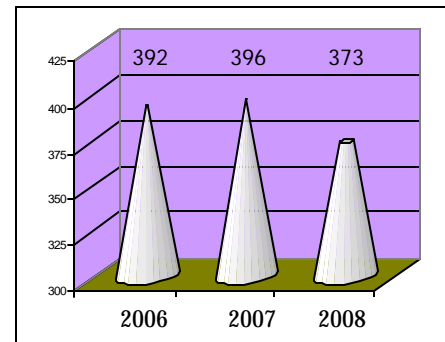
Free and
Reduced
Lunch
=
22%

Turn-Over
Rate
=
17%

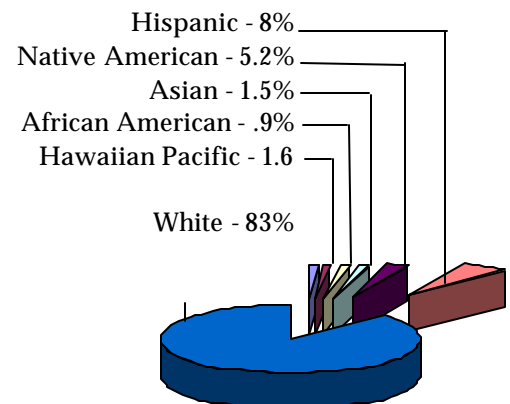
Average
Daily Student
Attendance
=
95%

Student
Teacher
Ratio
=
17.8:1

TOTAL ENROLLMENT



District Student Ethnicity, 2008



Education Profile is a comprehensive website for parents to use to see how well schools and districts are progressing with education reform. It includes results from the WASL Test taken by Washington students; demographic information at the state, district and building level; and an easy-to-use analysis tool for comparisons of schools and districts based on the user's selected criteria. To view more information about our school, you may visit the following link to the Washington Office of Superintendent of Public Instruction website: <http://reportcard.ospi.k12.wa.us>.

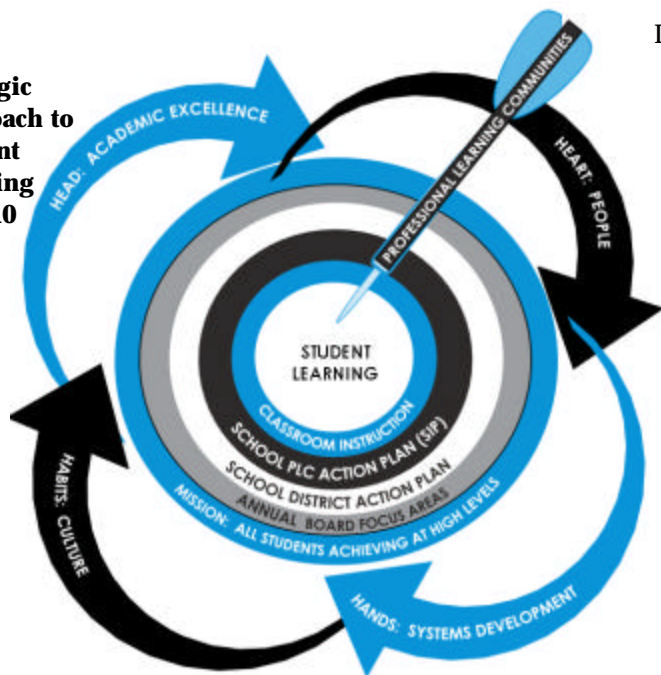
LEARNING IMPROVEMENT DAYS

During the 2008-2009 school year, the Washington State legislature provided two additional days of teacher time to be used for inservice training and teacher planning. These days were designed to support our efforts to help all students meet the new, higher learning standards identified in our state. The following represents how these two days were used in the Enumclaw School District:

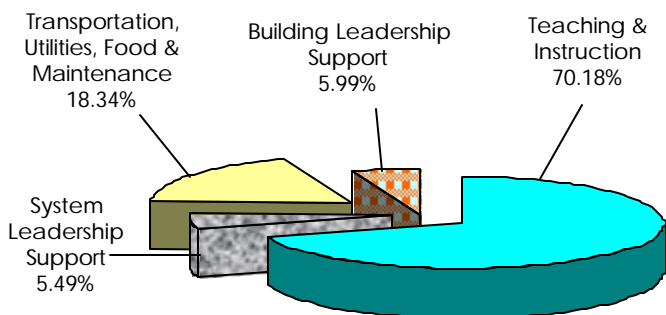
Day 1 – August, 2008: Sam Glenn--Author, Motivational Speaker and Artist

Day 2 – October, 2008: School improvement efforts to support learning of ALL students

Strategic Approach to Student Learning 2009-10

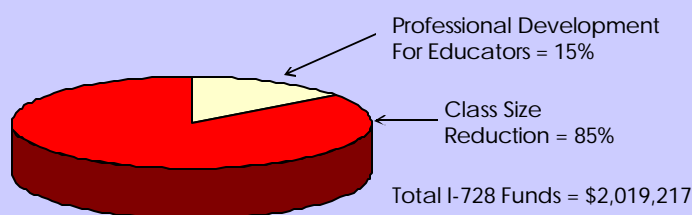


2008-2009 Annual Budget Report



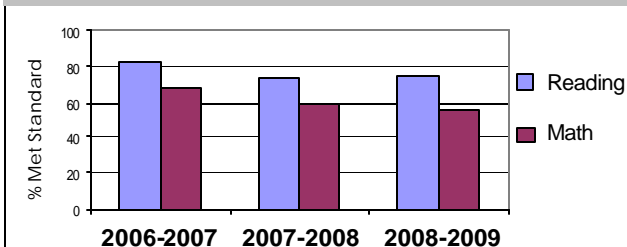
Average expenditure per pupil = \$10,451 (all programs)

2008-2009 Annual I-728 Report



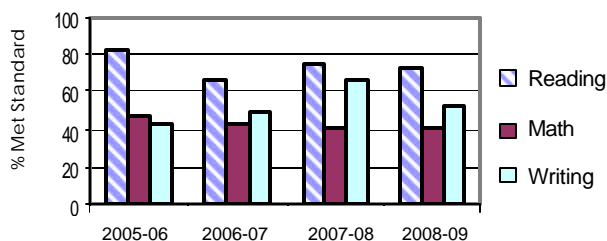
Westwood Grade 3 WASL Trend

| | 2006-07 | 2007-08 | 2008-09 |
|---------|---------|---------|---------|
| Reading | 82.3 | 69.4 | 70.3 |
| Math | 67.7 | 62.3 | 62.2 |



Westwood Grade 4 WASL Trend

| | 2005-06 | 2006-07 | 2007-08 | 2008-09 |
|---------|---------|---------|---------|---------|
| Reading | 83.0 | 66.2 | 73.8 | 72.1 |
| Math | 47.2 | 43.1 | 41.0 | 41.0 |
| Writing | 43.6 | 49.2 | 67.2 | 52.5 |



Westwood Grade 5 WASL Trend

| | 2006-07 | 2007-08 | 2008-09 |
|---------|---------|---------|---------|
| Reading | 77.2 | 82.1 | 84.8 |
| Math | 61.4 | 59.1 | 83.3 |
| Science | 36.8 | 36.4 | 51.5 |

